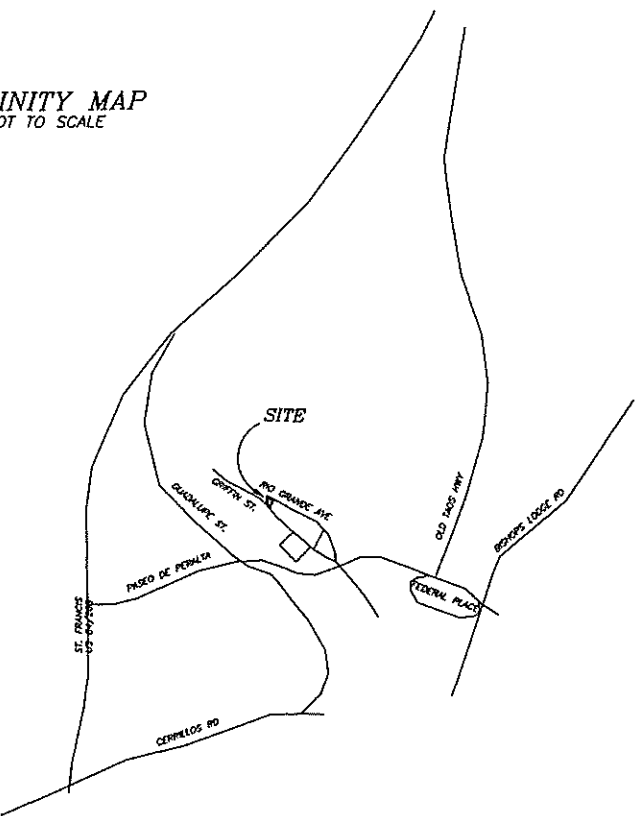


VICINITY MAP
NOT TO SCALE



LEGEND:

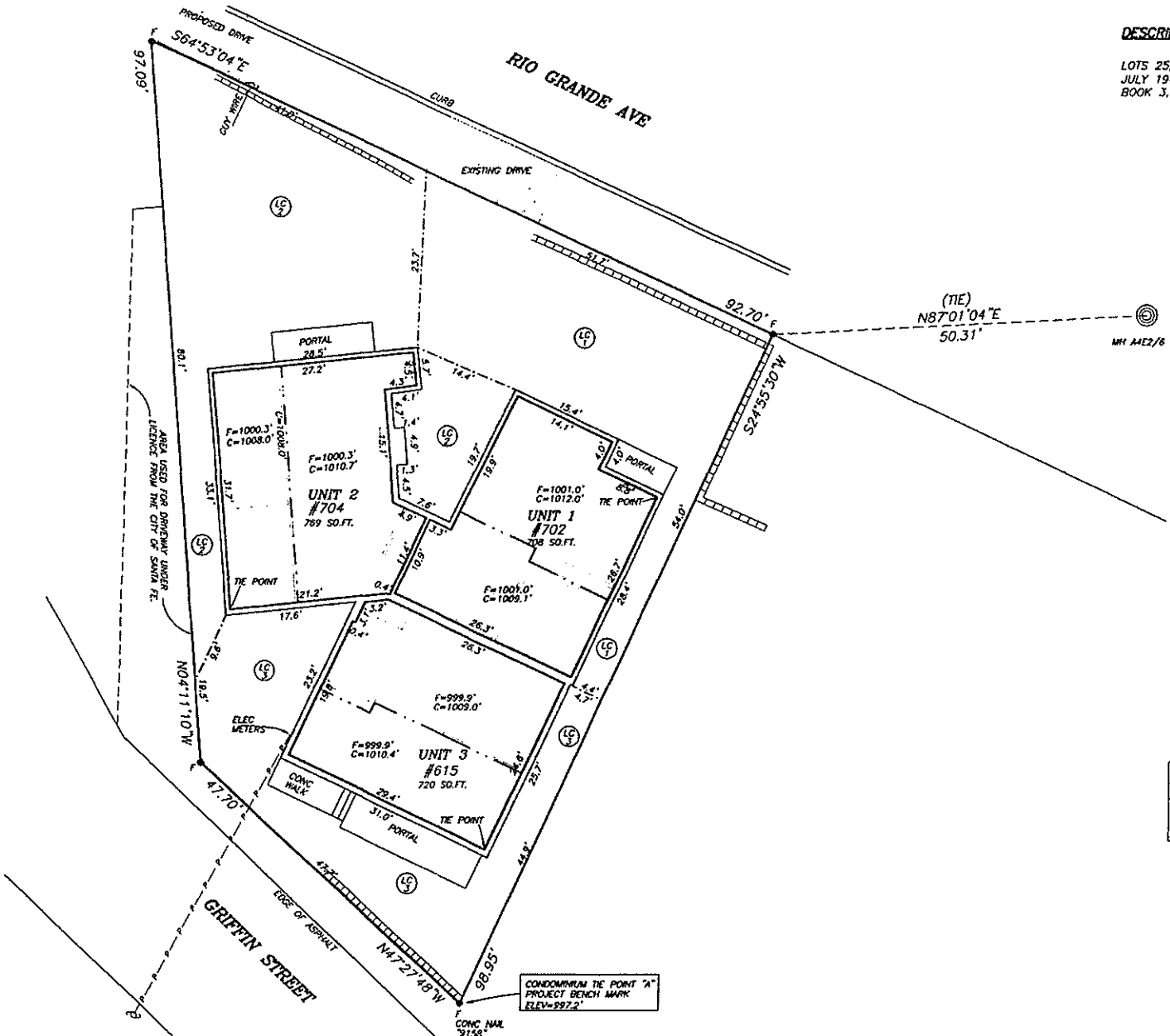
BOUNDARY INFORMATION IS FROM BOUNDARY SURVEY FOR KARL AND LISA RAY, RECORDED IN BOOK 550, PAGE 032. ELEVATIONS ARE ON ASSUMED DATUM, PROJECT BENCH MARK ELEVATION = 997.2'

- F DENOTES REBAR (OR AS SHOWN) FOUND
- U DENOTES UTILITY POLE
- M DENOTES MANHOLE
- ▬▬▬ DENOTES BLOCK WALL FENCE
- F= DENOTES FLOOR ELEVATION
- C= DENOTES CEILING ELEVATION
- - - DENOTES CEILING ELEVATION BREAKS
- - - DENOTES UTILITY LINE
- Ⓛ DENOTES LIMITED COMMON ELEMENT & UNIT NUMBER
- Ⓢ DENOTES COMMON ELEMENT

SURVEYORS CERTIFICATE:

I HEREBY CERTIFY THAT THIS PLAT IS A TRUE REPRESENTATION OF A SURVEY COMPLETED UNDER MY PERSONAL SUPERVISION ON THE 20th DAY OF DECEMBER, 2004. THE SURVEY AND PLAT ARE CORRECT, TRUE, MEET THE MINIMUM STANDARDS FOR LAND SURVEYS IN NEW MEXICO, AND CONTAINS ALL INFORMATION REQUIRED BY SECTION 47-7B-9, N.M.S.A.

GARY E. DAWSON, N.M.P.L.S. 7014

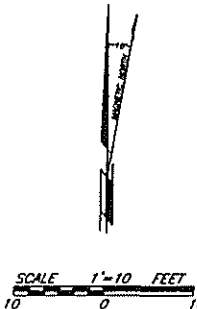


NOTES:

1. UNIT DIMENSIONS ARE INTERIOR.
2. INTERIOR PARTITION WALLS ARE PART OF THE UNIT.

DESCRIPTION

LOTS 25, 26, 27, AND 28 OF THE WILSON ADDITION, BY JAMES C. HARVEY, DATED JULY 1946 AND RECORDED IN THE OFFICE OF THE SANTA FE COUNTY CLERK IN BOOK 3, PAGE 404



UNIT TIES TO CONDOMINIUM TIE POINT "A"		
UNIT	BEARING	DISTANCE
1	S21°08'12"E	72.77'
2	S30°36'46"E	61.43'
3	S09°22'00"E	20.90'

BUILDING AREAS (FOOTPRINT PLUS 1/2 COMMON WALL)	
ADDRESS	AREA (SQ. FT.)
#702 RIO GRANDE	778
#704 RIO GRANDE	854
#615 GRIFFIN ST.	803

SURVEY PLAT OF
LAS ROSAS CONDOMINIUM

LOTS 25, 26, 27, & 28 OF THE WILSON ADDITION,
BOOK 3, PAGE 404
#615 GRIFFIN STREET, #702 AND 704 RIO GRANDE AVE.
PROJECTED SECTION 24, T17N, R9E, NMPM
CITY OF SANTA FE, NEW MEXICO
UPC CODE 1-054-099-035-436

1361435
COUNTY OF SANTA FE
STATE OF NEW MEXICO
I HEREBY CERTIFY THAT THIS PLAT WAS FILED FOR RECORD ON THE 20th DAY OF DECEMBER, 2004, AT 11:10 O'CLOCK A.M. AND WAS OPEN TO PUBLIC INSPECTION IN THE OFFICE OF THE COUNTY CLERK OF SANTA FE COUNTY, NEW MEXICO.
WITNESS MY HAND AND SEAL OF OFFICE
Valerie Espinoza
County Clerk Santa Fe County, N.M.
COUNTY



G. DAWSON & ASSOCIATES
PROFESSIONAL LAND SURVEYORS
2502 CAMINO ENTRADA
SANTA FE, N.M. 87505-4771-6880
FILED 6800 DATE: 12-22-04